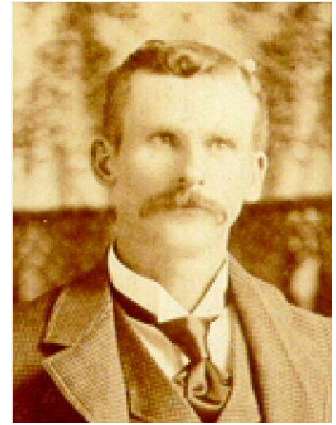
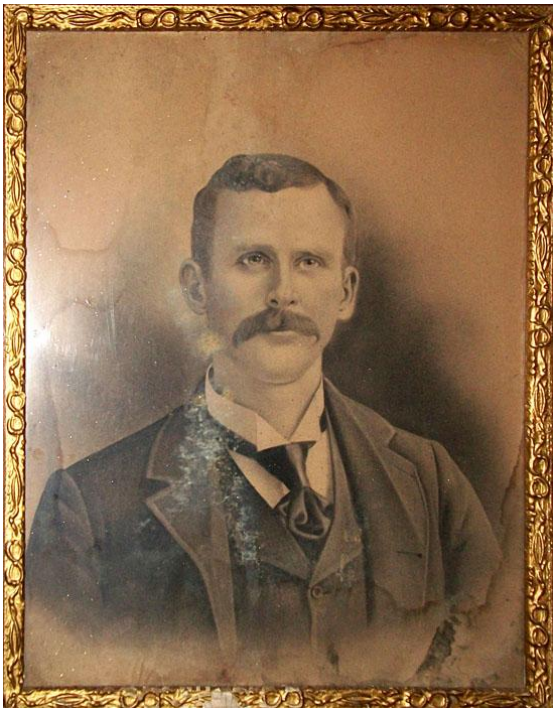


My father's father, Oakley Vincent, was 36 years old when he married for the first time in 1906 to 18 year old Penoma Ophelia Seay. Their grandchildren knew Oakley and Oma as "Pawpaw" and "Mammaw."

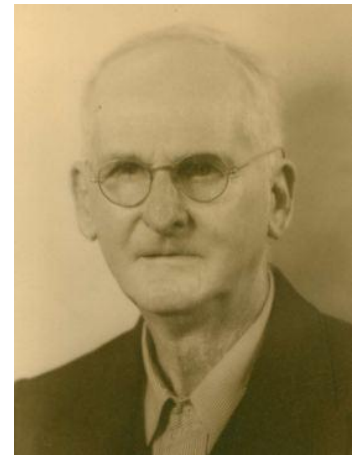


Oma came from an artistic family. Oma's mother may have made the large pencil drawing below from a 3 by 5 inch wedding photo to the right. We don't know who made it.

The pencil drawing is 18 inches by 24 inches. In the 1800s, an artist with talent could create a large portrait from a smaller one using a graphite pencil and a [Camera Lucida](#).



On July 14, 2011 I gave the large pencil drawing to Leah, Oakley's great-granddaughter.



The frame was restored by Oakley's daughter, Evelyn Vincent Farris, an antique dealer. She made clay molds from existing molding and plaster of Paris. She glued her molds onto the damaged area then painted the frame with paint she made from gold luster dust and banana oil.

Oakley Vincent (1870-1955) & **Penoma Ophelia Seay** (1888-1955)

|

**Wilburn Glenwood Vincent** (1919-1993) & Doris Virginia Warren (1924-2001)

|

**Ronald Eugene Vincent** (1947- ) & Beverly Sue Little (1949-2003)

|

**Leah**

Ron Vincent

Nov. 2010